

Part Number: PT967-C1212-02**Kit Contents**

Item #	Quantity Req.	Description
1	1	Spoiler
2	1	Hardware Bag
3	1 each	A & B side Mylar template

Hardware Bag Contents

Item #	Quantity Req.	Description
1	4	Spin Nut-M6
2	5	Foam Washer-1.5mm thick
3	4	Hole Plug

Additional Items Required for Installation

Item #	Quantity Req.	Description
1		
2		
3		

Conflicts

None

Recommended Tools

Personal & Vehicle Protection	Notes
Safety Glasses	
Blankets	
Wrist & Belt Protectors	
Masking Tape	1-2" wide
Special Tools	Notes
Non-Intrusive IR Temperature Probe/Gun	
Installation Tools	Notes
Drill	
Twist drill bit (for plastic)	3.0mm
Twist drill bit (for plastic)	6.5mm
Twist drill bit (for plastic)	9.0mm
Step bit	3/4 inch
Trim Removal Tool	
Deburring tool or file	
Socket	10mm socket
Extension	8-12"
Swivel	
Scale	
Center punch	
Torque wrench	Small handle, 3 Nm. torque
Torx screwdriver	T20, T25
Special Chemicals	Notes
Sealant	3M™ Ultra-Pro Body Sealant
Cleaner	VDC Approved Cleaner

General Applicability

MY21 and newer Supra Models

Recommended Sequence of Application








Item #	Accessory
1	
2	

*Mandatory

Vehicle Service Parts (may be required for reassembly)

Item #	Quantity Req.	Description
1		
2		
3		

Legend

	STOP: Damage to the vehicle may occur. Do not proceed until process has been complied with.
	OPERATOR SAFETY: Use caution to avoid risk of injury.
	CAUTION: A process that must be carefully observed in order to reduce the risk of damage to the accessory/vehicle and to ensure a quality installation.
	TOOLS & EQUIPMENT: Used in Figures calls out the specific tools and equipment recommended for this process.
	REVISION MARK: This mark highlights a change in installation with respect to previous issue.
	SAFETY TORQUE: This mark indicates that torque is related to safety.
	REGULATORY MARK: This mark indicates the component is related to regulatory compliance

Procedure

Care must be taken when installing this accessory to ensure damage does not occur to the vehicle. The installation of this accessory should follow approved guidelines to ensure a quality installation.

These guidelines can be found in the "Accessory Installation Practices" document.

This document covers such items as:-

- Vehicle Protection (use of covers and blankets, cleaning chemicals, etc.).
- Safety (eye protection, rechecking torque procedure, etc.).
- Vehicle Disassembly/Reassembly (panel removal, part storage, etc.).
- Electrical Component Disassembly/Reassembly (battery disconnection, connector removal, etc.).

Please see your Toyota dealer for a copy of this document.

1. Prepare the Vehicle.



- (a) Installation of the rear spoiler should not take place until the following have been completed:

- (1) The car is washed.
- (2) The trunk and spoiler should be a minimum of 60°F for proper set-up of adhesive tape. Use a hot air blower to heat the surface if the temperature is below 60°F.

- (b) Open the trunk lid and place blankets to protect the rear fenders, rear fascia and the inner trunk area (Fig. 1-1).



Fig. 1-1

- (c) Remove inner hatch panel (Fig. 1-2).



Fig. 1-2



Fig. 1-3

- (d) Remove the antenna modules (Fig. 1-3).

2. Install the Mylar Templates.

- (a) Place the installation template (PT967-C1210-TL) onto the trunk lid surface with the FRONT arrow pointing toward the front of the vehicle (Fig. 2-1).



Fig. 2-1

⚠ NOTE: It is very important that the template does not have any wrinkles when it is positioned to ensure the holes are drilled in the proper location. The installation template should lay flat and tight against the vehicle surface.

- (b) Align the rear edge of the template above the emblem with the top edge of the emblem (Fig. 2-2). Place a temporary piece of tape lightly to hold template in place while adjusting remaining areas.



Fig. 2-2

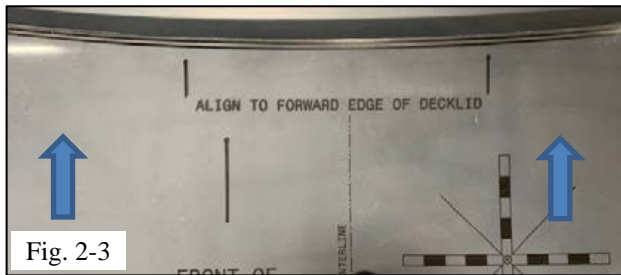


Fig. 2-3

- (c) Align the template to the front of the deck lid (Fig. 2-3). Using a scale, verify the locations marked by arrows are equidistant from the deck lid's edge. The template should be centered left to right on the trunk lid (Fig. 2-3). Place two pieces of tape (Fig. 2-4) to secure the template to the deck lid.

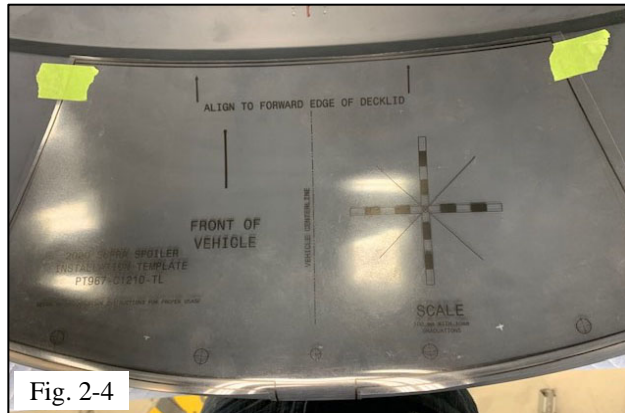


Fig. 2-4



Fig. 2-5

- (d) Align the rear of the template to the deck lid by centering the peak of the deck lid within the two lines identified by arrows (Fig. 2-5).



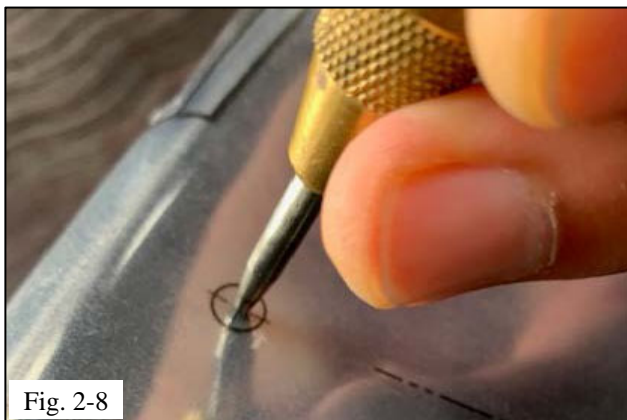
Fig. 2-6

- (e) Place two pieces of tape (Fig. 2-6) to secure the template to the deck lid.



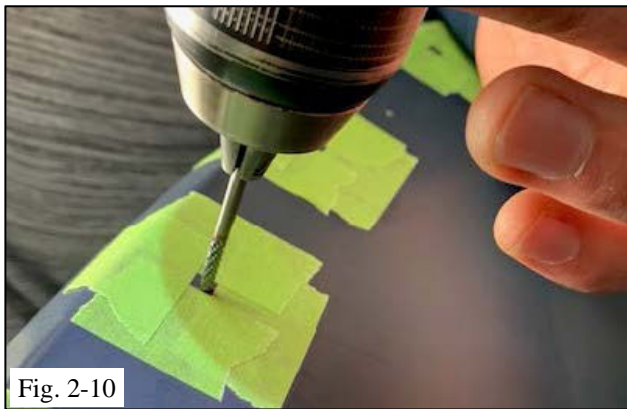
- (f) Remove temporary tape (b) above, verify template is still aligned with emblem, and apply two pieces of tape as shown (Fig. 2-7).

⚠ CAUTION: When all tape has been applied, ensure that no shifting of the template occurred by double checking the position of all alignment tabs.



- (g) Center punch through the installation template at each of the five cross hair locations (Fig. 2-8). This indentation in the deck lid will be used to accurately position the drill bit and prevent the drill bit from “walking”.
- (h) Remove the installation template carefully to ensure the tape does not damage the paint.
- (i) If desired, use the center punch to re-punch the hole locations to make the indentation “deeper”
- (j) Apply tape around each center punched location to protect the paint if the drill bit slips (Fig. 2-9).





- (k) Drill a pilot hole at each center punched location using a 3mm (1/8") drill bit (Fig. 2-10).

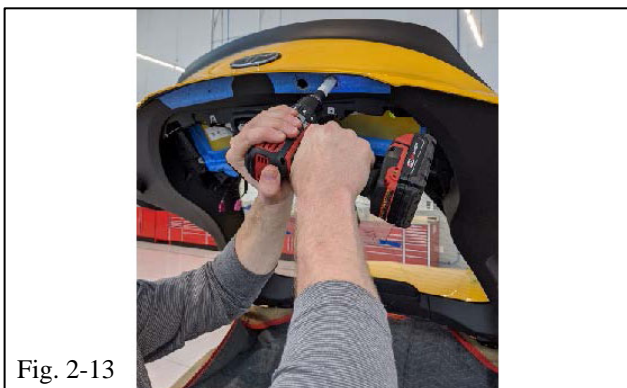
+ CAUTION: Eye protection must be worn during all hole drilling.

- (l) Enlarge each drilled hole:
- (1) Center Hole with 6.5mm drill bit.
 - (2) Remaining (4) holes with 9.0mm bit
- (m) Remove the masking tape surrounding the holes and use a de-burring tool or file to remove any burrs on the edges of the drilled holes (Fig. 2-11).

⚠ NOTE: Use caution when removing the burrs with a de-burring tool. The deck lid material is softer than sheet metal and can be gouged by the tool if too much force is applied.



- (n) Install inner panel drill template (Fig. 2-12). Drill 3.0mm pilot holes and then 19mm holes using a step drill bit (Fig. 2-13) .



3. Install the Spoiler

- (a) Prep the spoiler by removing the silicon protector sleeves and installing the foam washers on each stud (Fig. 3-1). Clean the rear hatch of the vehicle with VDC approved cleaner.



Fig. 3-1

- (b) Pull back a small portion of each tape liner to expose some of the tape on the ends (Fig. 3-2). Do this on both LH and RH sides.



Fig. 3-2

⚠ NOTE: For the tape along the tips, pull back from the inboard edge of the liner, not where the pull tab is.

- (c) Place spoiler lightly on deck lid aligning the center locating pin with the center hole and carefully insert the hardware into the remaining drilled holes (Fig. 3-3). The spoiler should lightly adhere to the decklid from the exposed tape.

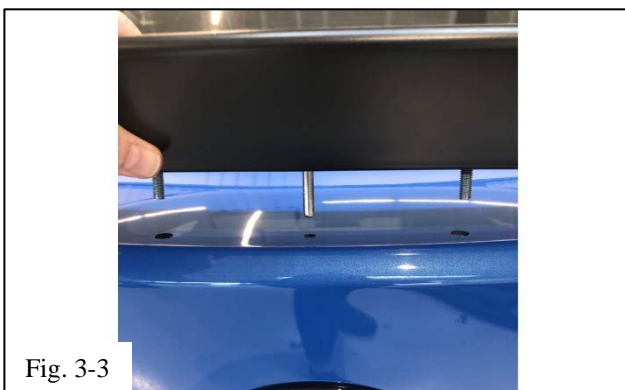


Fig. 3-3

⚠ NOTE: Ensure the gap between the rear character line and spoiler rear edge is consistent before proceeding with spoiler install (Fig. 3-4).

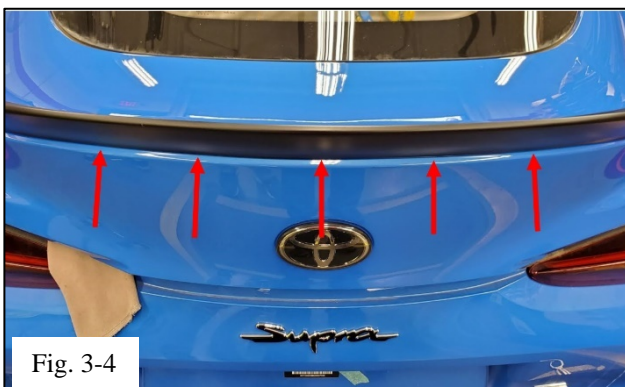


Fig. 3-4



- (d) When the spoiler is in position, pull back the remaining tape liner in this sequence, pushing down on each edge after removing the liner (Fig. 3-5).

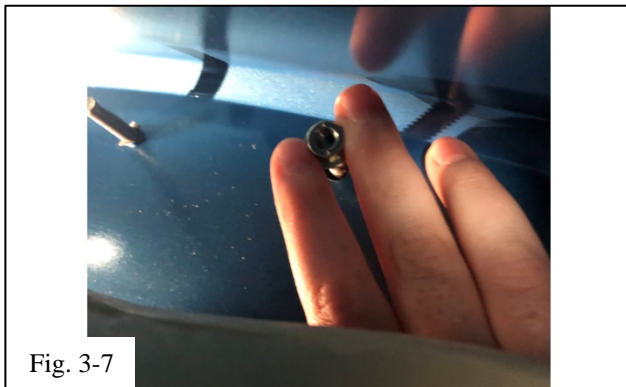
(1) Front edge (push down on tape).

(2) Rear edge (push down on tape).

(3) Tips (push down on tape).



- (e) Before trying to install the nuts, tape around the edges of the antenna opening in order to prevent the hardware from falling into the decklid (Fig. 3-6).



- (f) Using fingertips through the antenna openings, or a socket through access holes, thread the nuts on the four bolts. Torque down starting with inside fasteners and then doing the outside fasteners (Fig. 3-7, 3-8).

Torque: 4.0 N-m (2.9 ft-lb, 34.8 in-lb)





Fig. 3-9

- (g) Once all four nuts are torqued, install the supplied plugs into each access hole (Fig. 3-9).

4. Reassemble the Vehicle



Fig. 4-1

- (a) Reinstall both antennas, ensuring the cables reattach to the same color clip (Fig. 4-1).

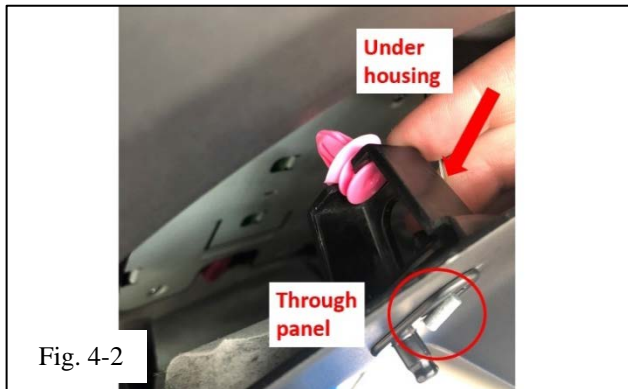


Fig. 4-2

- (b) Reinstall the trim panel by first engaging the clips on the passenger side of the vehicle. While the clips hold the panel in place, run the emergency release cable back under the clip housing and through the hole in the panel (Fig. 4-2).
- (c) Reinstall the emergency release handle on the cable. Push the trim panel back into place engaging the remaining clips.



Fig. 4-3

- (d) Screw the trim panel back into place and replace the screw coverings taking into account the Left and Right specifications (Fig. 4-3).



- (e) Before closing the deck lid, ensure the cargo deck board is clipped back into place and that the tension cord is not tangled on the deck board (Fig. 4-4).

Checklist - these points **MUST** be checked to ensure a quality installation.

<u>Check:</u>	<u>Look For:</u>
<u>Accessory Function Checks</u> <input type="checkbox"/> Check for visual alignment <input type="checkbox"/> Check for consistent gaps to the vehicle	 The spoiler should appear visually centered on the vehicle. Max gap of 2.0 mm around perimeter of spoiler.
<u>Vehicle Function Checks</u> <input type="checkbox"/> Verify trunk lid operation. <input type="checkbox"/> Verify Emergency Trunk Release Handle operation.	 When opened, the trunk lid should initially pop up slightly and remain in the fully raised position when opened fully. Emergency Trunk Release Handle operates correctly. (With the trunk lid in the open position, trip the trunk lock closed using a nylon pry tool. Pull the emergency trunk release handle and verify the trunk lock has opened.)
<u>Vehicle Appearance Check</u> <input type="checkbox"/> After accessory installation and removal of protective cover(s), perform a visual inspection.	 Ensure no damage (including scuffs and scratches) was caused during the installation process. (For PPO installations, refer to TMNA Accessory Quality Shipping Standard.)