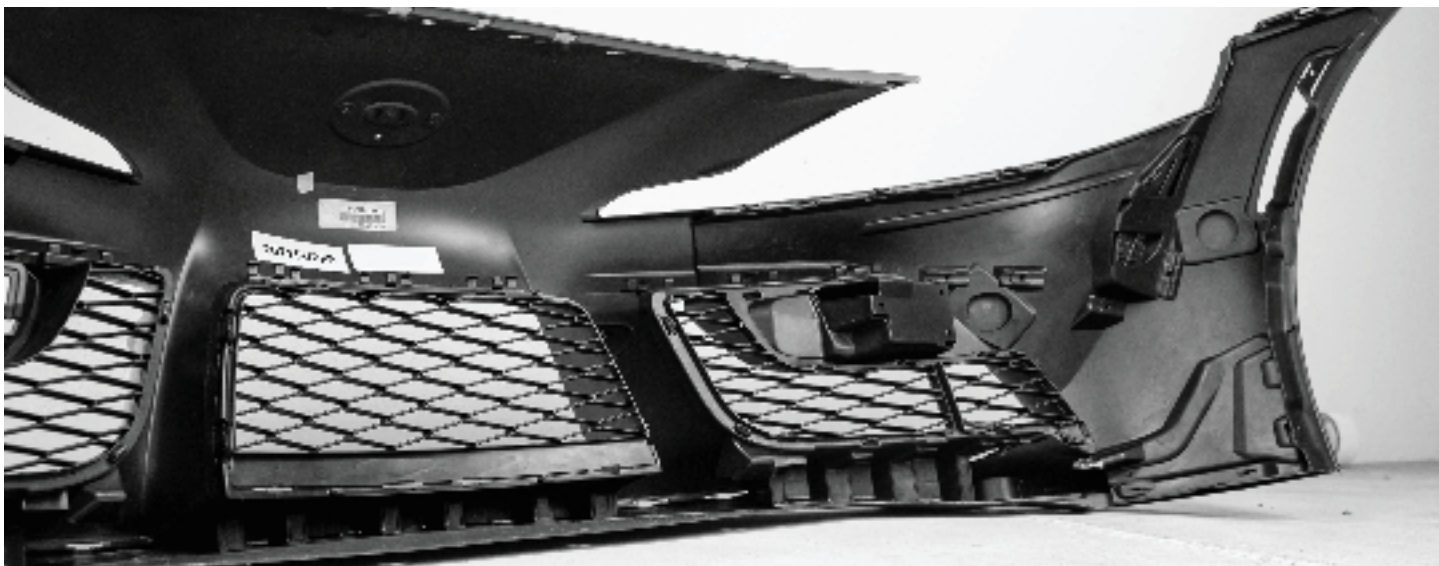


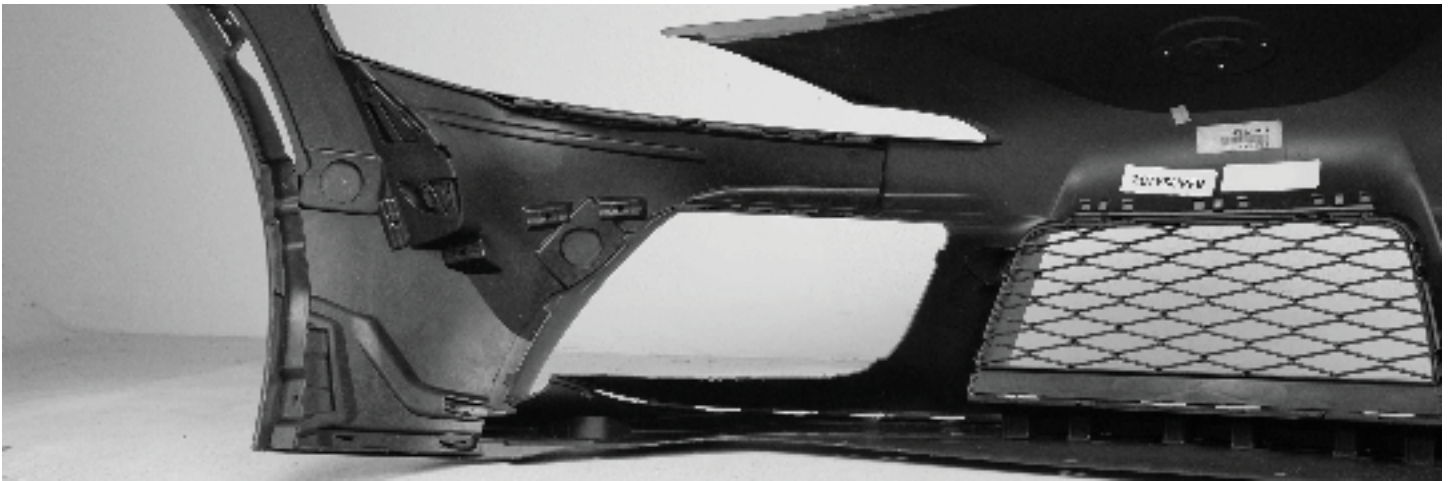
# FL20TYSUP INSTALLATION

1. Remove the front bumper from your vehicle. Be sure to protect the painted areas with painters tape . Use caution when removing parts.
2. Carefully remove the factory front lip from the bumper being cautious not to damage the paint.



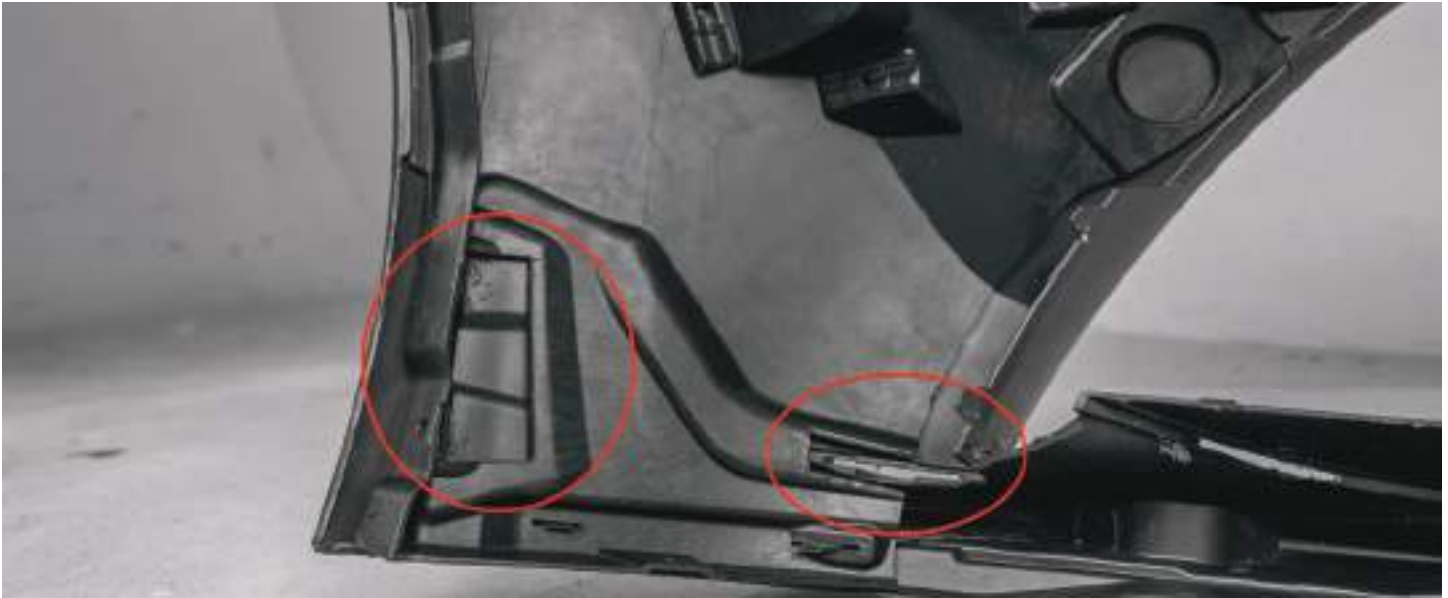
3. Remove the left and right mesh plastic panels from inside of bumper.



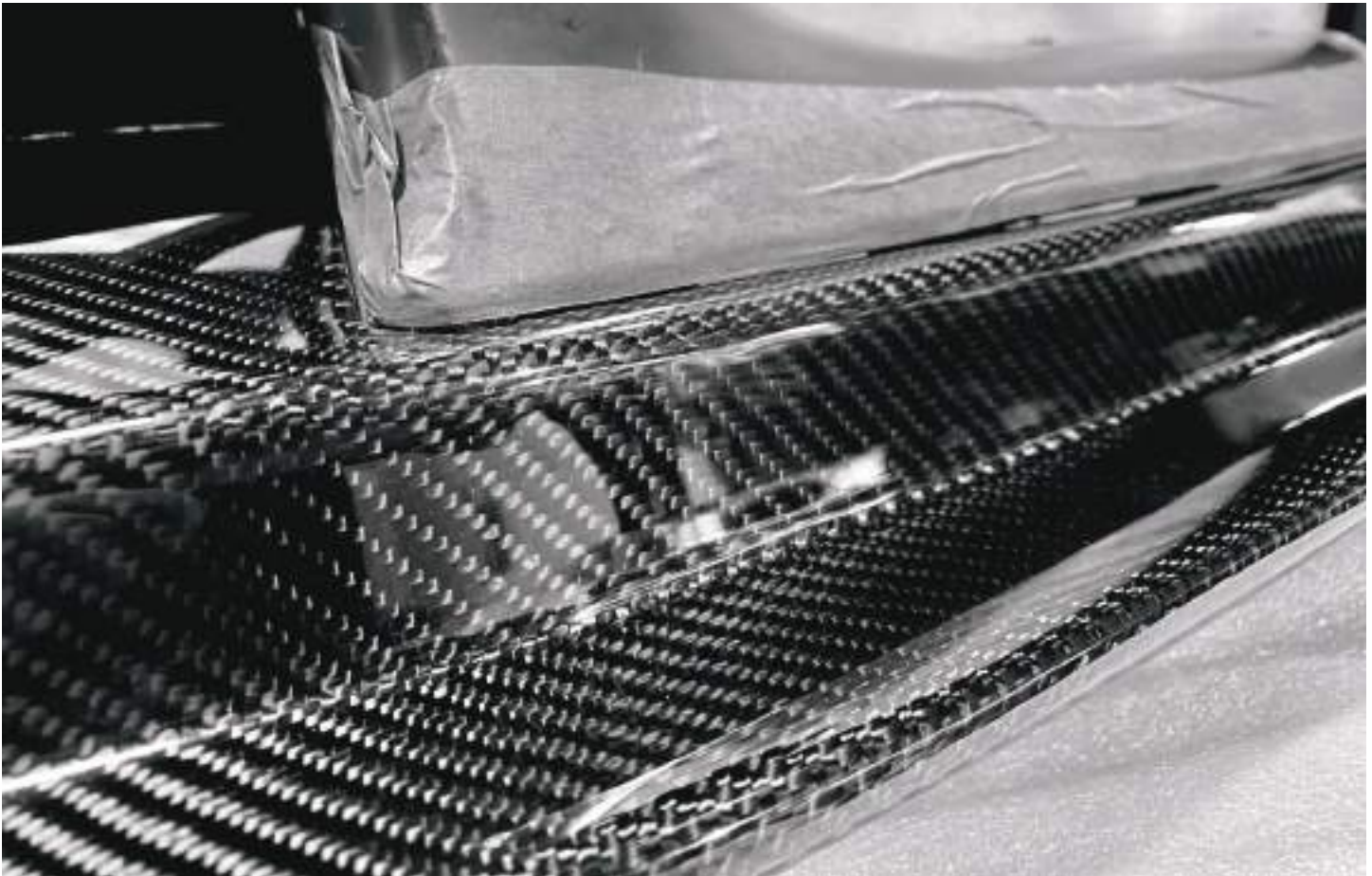


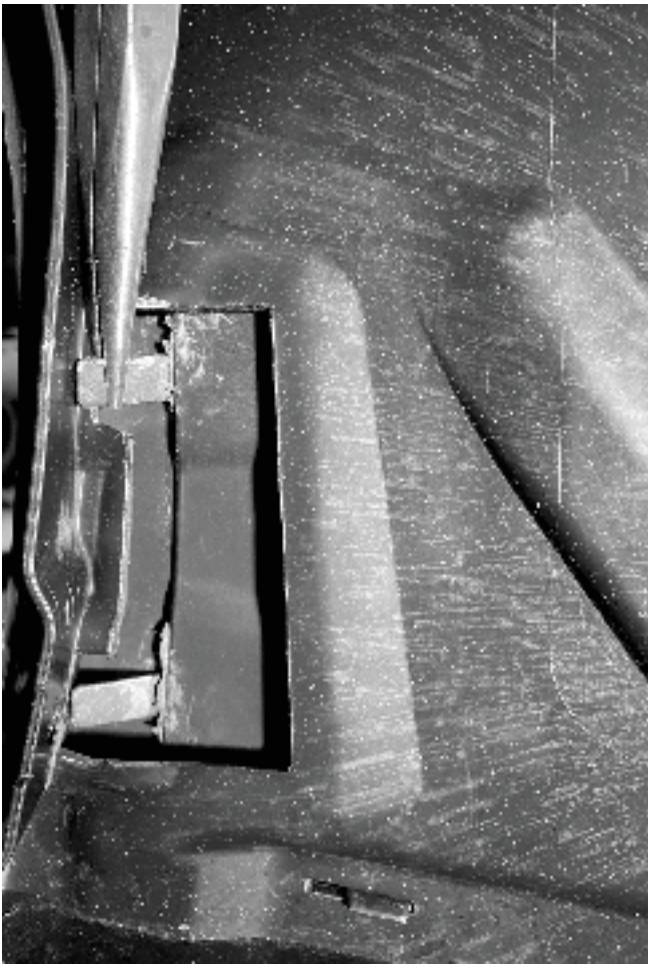
4. Use tape or mark the area that you will be cutting off from the panel. A knife or Dremel can be used to cut, if done carefully and cleaned up, a very clean cut can be made.



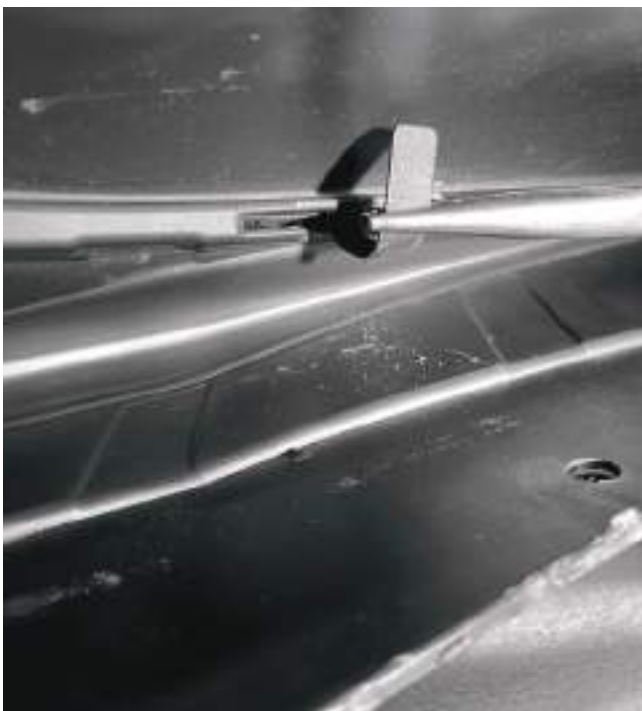


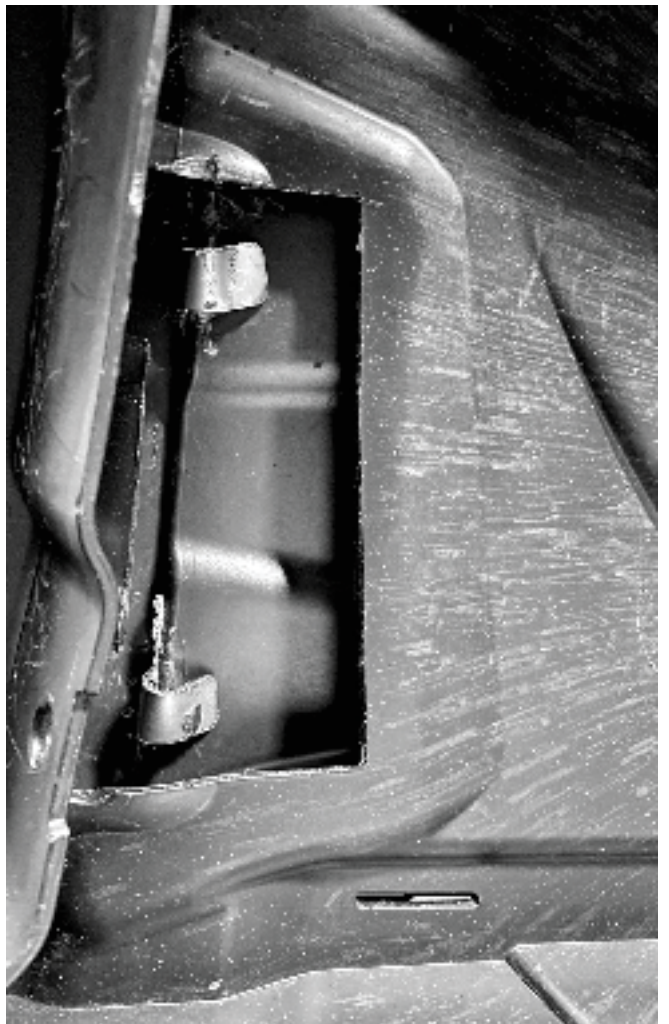
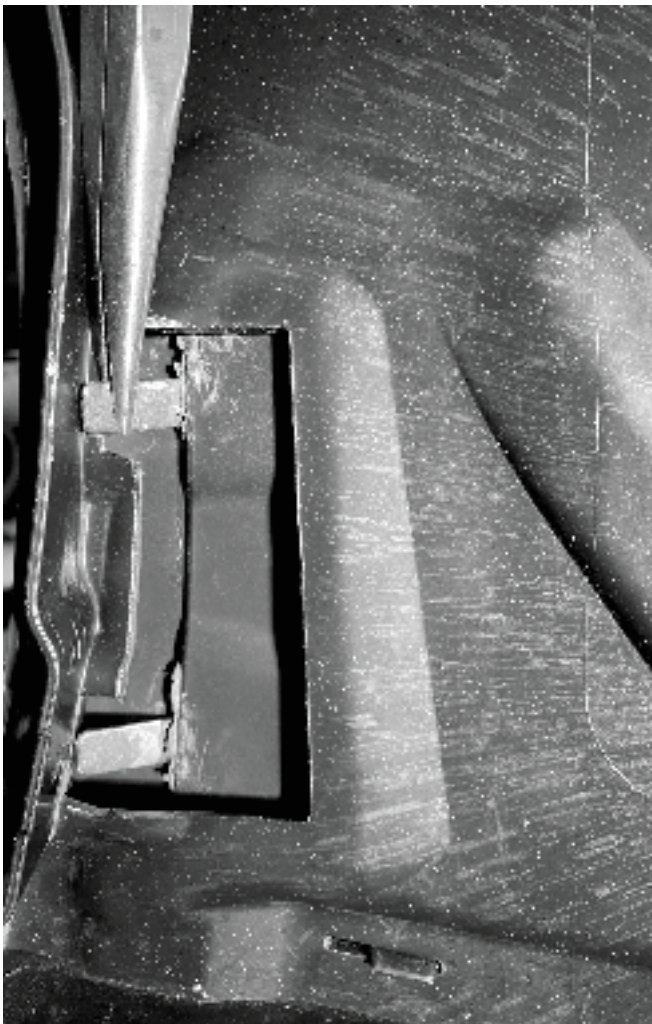
5. Begin installing the lip by aligning all tabs to the slots. All tabs should be straight and flat except for the two on each end. Each of those pairs should be facing back away from lip. Make sure the center area of the lip is seated fully into the bumper and make sure the front corners of the bumper are over the carbon lip. This is usually an indication that the lip is seated fully into the bumper.





6. While keeping the lip fitting tight to the bumper in the center, begin bending the tabs down and tight. Next move to the next section and bend those tabs one way then the other. A pair of needle nose pliers will help, forming the tabs into a Z shape will help keep tension. Next move to the ends of the lip. Keep the ends of the lip tight to the bumper and use needle nose pliers to form a C. Doing this will help keep tension and keep the 2 pieces gap free.







7. Look at the fitment of bumper and lip make sure it has no gaps before installing the panels back on. If you are happy with fitment then install panels back on and bumper back on to your car.

