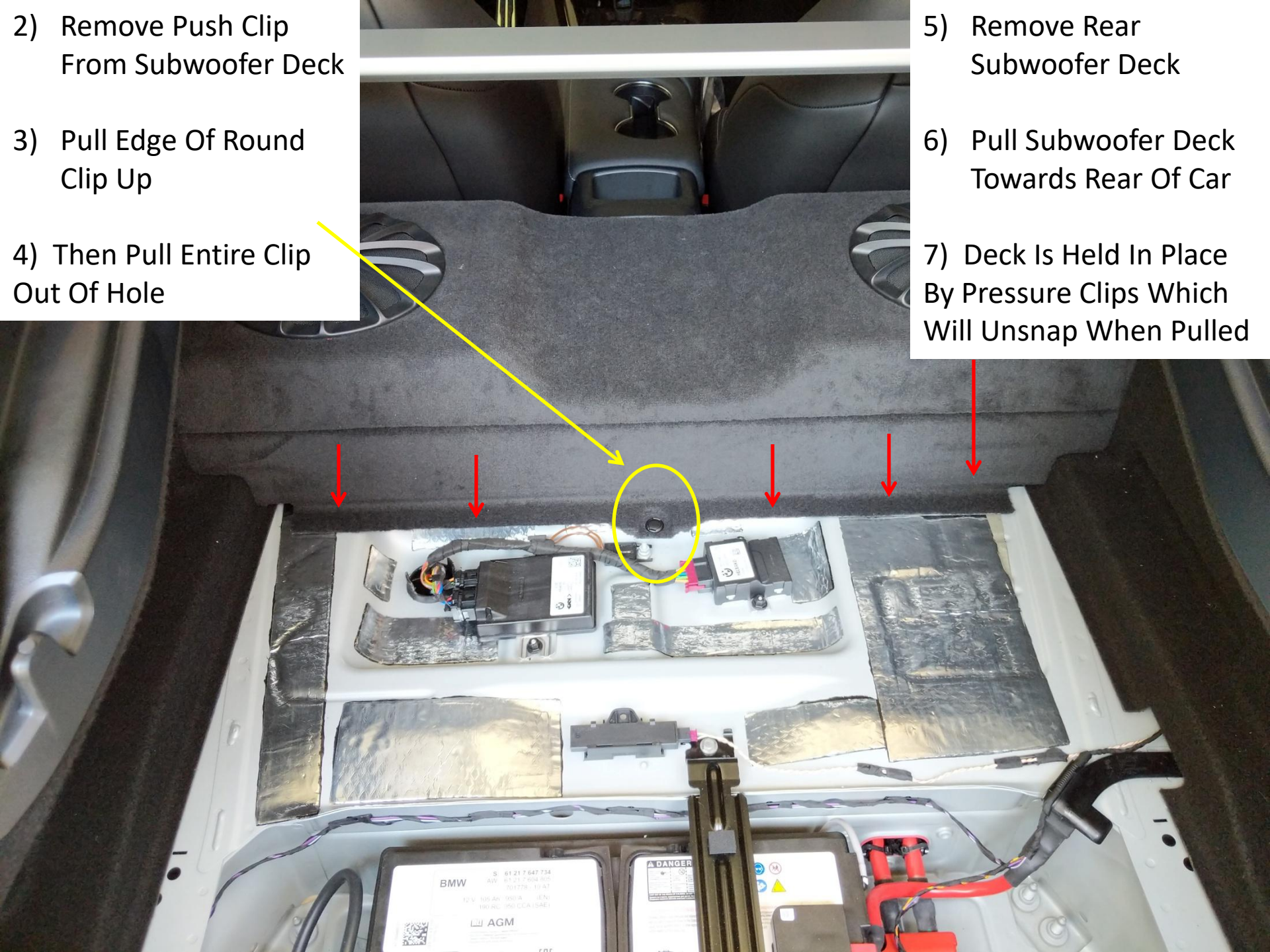


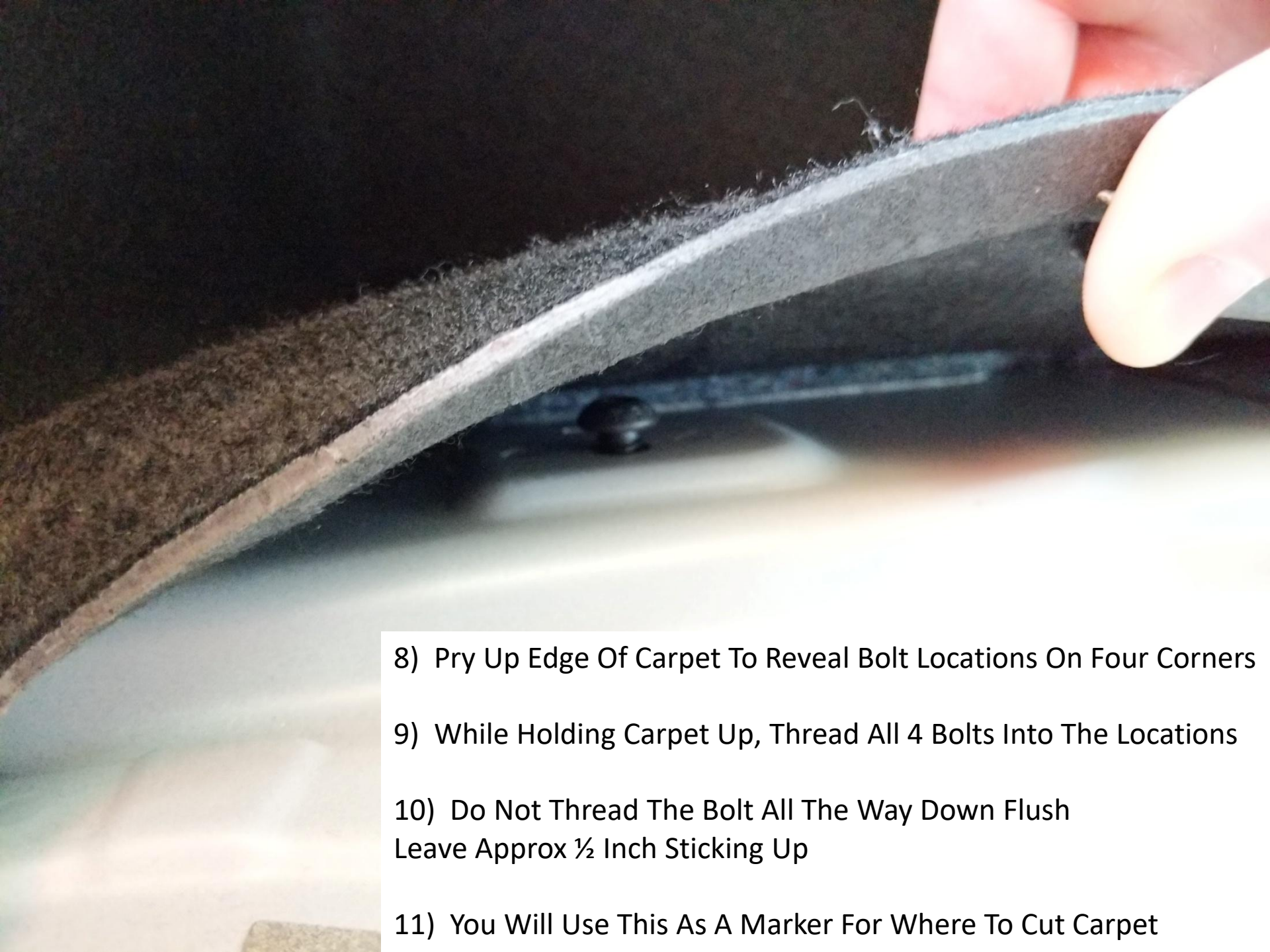
1) Remove Rear Deck Lid  
Covering Battery From Car



- 2) Remove Push Clip From Subwoofer Deck
- 3) Pull Edge Of Round Clip Up
- 4) Then Pull Entire Clip Out Of Hole

- 5) Remove Rear Subwoofer Deck
- 6) Pull Subwoofer Deck Towards Rear Of Car
- 7) Deck Is Held In Place By Pressure Clips Which Will Unsnap When Pulled



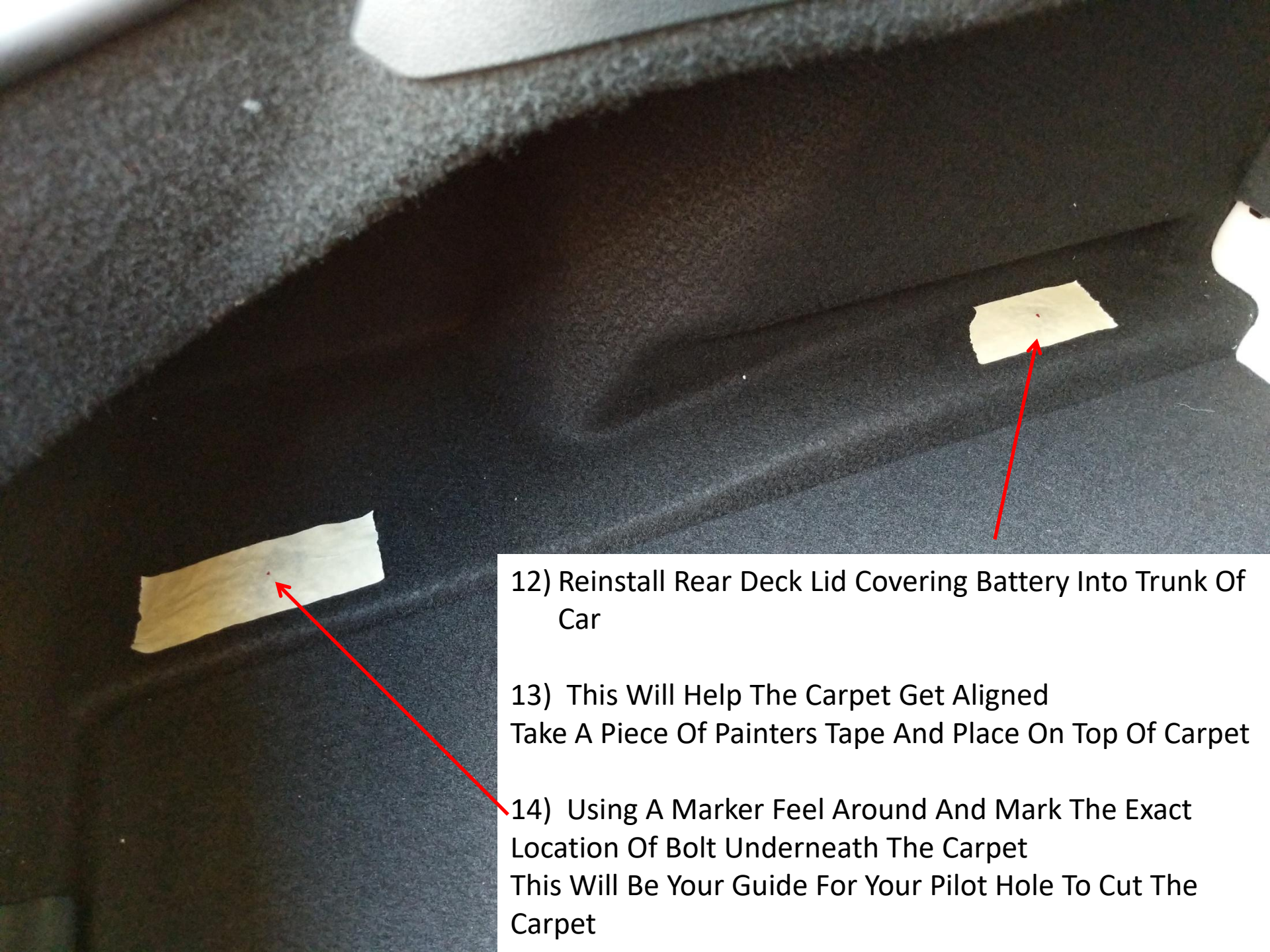


8) Pry Up Edge Of Carpet To Reveal Bolt Locations On Four Corners

9) While Holding Carpet Up, Thread All 4 Bolts Into The Locations

10) Do Not Thread The Bolt All The Way Down Flush  
Leave Approx  $\frac{1}{2}$  Inch Sticking Up

11) You Will Use This As A Marker For Where To Cut Carpet



12) Reinstall Rear Deck Lid Covering Battery Into Trunk Of Car

13) This Will Help The Carpet Get Aligned  
Take A Piece Of Painters Tape And Place On Top Of Carpet

14) Using A Marker Feel Around And Mark The Exact Location Of Bolt Underneath The Carpet  
This Will Be Your Guide For Your Pilot Hole To Cut The Carpet

15) Remove The Rear Deck Lid Covering Battery & Remove The Four Bolts Under The Carpet

16) Using The Marker Spot As Your Guide You Will Need To Cut A Hole In The Carpet For The Bolt To Go Through

17) **Caution:** Do Not Cut The Hole Bigger Than Needed For The Bolt To Go Through. Also Be Sure To Not Cut Any Wires Or Into The Metal Of The Car

19) **Tip:** You Can Use Razor Blade, Cordless Drill, Or Dremel To Help Cut The Carpet



20) **Tip:** Be Sure To Hold The Carpet Up In The Air So You Don't Cut, Drill, Dremel Into The Metal Of The Car

21) Carpet Holes Should Now Line Up With Bolt Housing. You Should Be Able To See Threads Through The Carpet.





22) Using Allen Wrench Install:

- (1) Bolt
- (1) Washer
- (1) Lashing Eye On All Four Corners

23) **Tip:** Tighten Lashing Eye If You Want To Lock In Place. You Can Also Leave Snug If You Want It To Swivel.

24) Reinstall Subwoofer Rear Decking

25) Reinstall Rear Deck Lid Covering Battery

26) Install Net And Adjust As Needed

27) **Tip:** You Can Take Slack Out Of Edge Of Net By Pulling On Elastic Cord And Tie Off Slack

